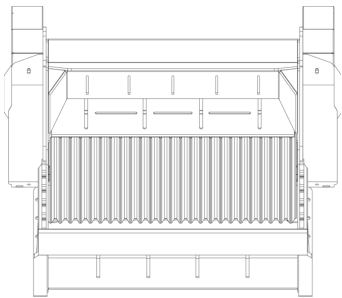
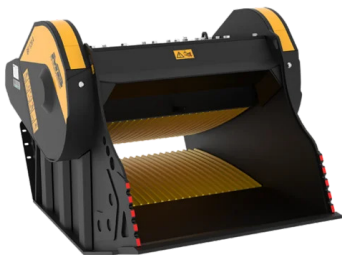
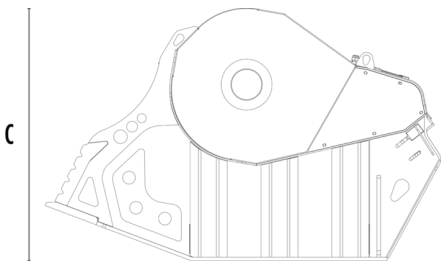


CRUSHER BUCKET

BF120.4 S4



A



B



SPECIFICATIONS



Recommended excavator	ton	30 - 45
Weight	ton	4,8
Load capacity	m³	1.3
Pressure	bar	220 - 280
Back pressure	bar	< 10
Oil flow rate*	l/min	190 - 250
Crusher mouth width	mm	1205
Crusher mouth height	mm	540
Size A	mm	1620
Size B	mm	2185
Size C	mm	1390

* The minimum hydraulic flow rate value must be alongside the required operating pressure.

OPTIONAL ACCESSORIES

Dust suppression kit	Hour meter
24 V Iron Separator	24 Month Warranty

APPLICATION AREAS



Demolitions



Road works



Quarry



Mines



Tunnels



Enclosed spaces



Pipelines



Inert material
recycling



Urban construction
sites



Foundries



Forest maintenance