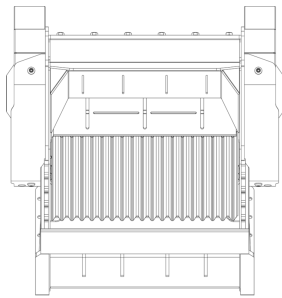
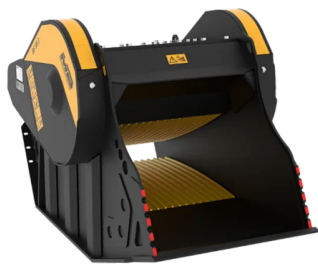
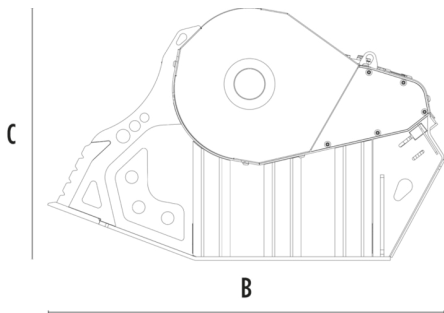


# CRUSHER BUCKET BF90.3 S4



A



B



## SPECIFICATIONS



Recommended excavator	ton	21 - 32
Weight	ton	3,5
Load capacity	m³	0.9
Pressure	bar	220 - 280
Back pressure	bar	< 10
Oil flow rate*	l/min	180 - 220
Crusher mouth width	mm	910
Crusher mouth height	mm	540
Size A	mm	1340
Size B	mm	2185
Size C	mm	1390

\* The minimum hydraulic flow rate value must be alongside the required operating pressure.

## OPTIONAL ACCESSORIES

Dust suppression kit	Hour meter
24 V Iron Separator	24 Month Warranty

## APPLICATION AREAS



Demolitions



Road works



Quarry



Mines



Tunnels



Enclosed spaces



Pipelines



Inert material  
recycling



Urban construction  
sites



Foundries



Forest maintenance