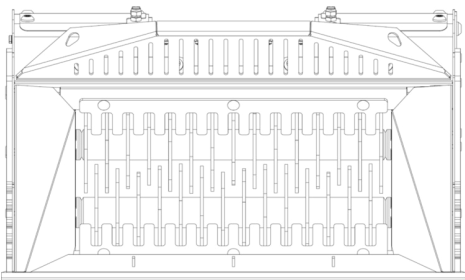
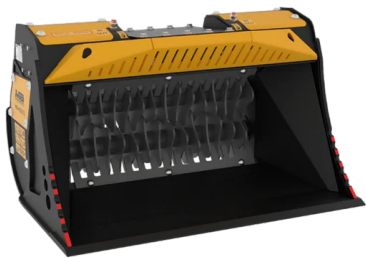
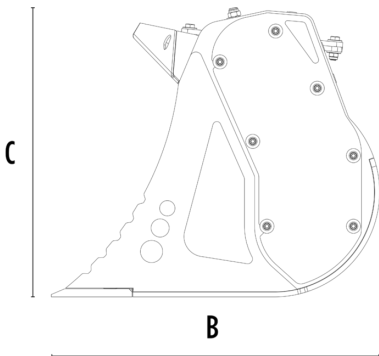


SHAFTS SCREENER
MB-HDS212






A



B

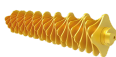

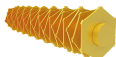



SPECIFICATIONS

| | | | |
|---|------------------------------------|-------|-----------|
|  | Recommended excavator | ton | 5 - 10 |
|  | Recommended backhoe loader/loader* | ton | 8 - 9** |
|  | Recommended skid steer loader* | ton | 3 - 4 |
| | Weight | ton | 0,48 |
| | Load capacity | m³ | 0.15 |
| | Pressure | bar | 200 - 250 |
| | Oil flow rate*** | l/min | 75 - 100 |
| | Size A | mm | 1220 |
| | Size B | mm | 815 |
| | Size C | mm | 710 |

* Please verify machine's Rated Operating Capacity.
** Installable on the backhoe loader boom only.
*** The minimum hydraulic flow rate value must be alongside the required operating pressure.

SHAFT KIT

| KIT | APPLICATION |
|---|---|
|  RQ8 Sifting kit RQ20 Sifting kit RQ50 Sifting kit | Sifting damp/dry soil Soil Aeration |
|  RM Mixer kit | Coal reduction Soil Aeration Compost Aeration Glass reduction Drywall reduction |
|  RE8 Fine sifting kit RE16 Fine sifting kit | Sifting damp/dry soil |
|  RC Compost kit | Shredding foliage and small branches Composting |

* Shafts in closed position.

OPTIONAL ACCESSORIES

| | |
|--------------|-------------------|
| Shaft holder | 24 Month Warranty |
|--------------|-------------------|

APPLICATION AREAS

