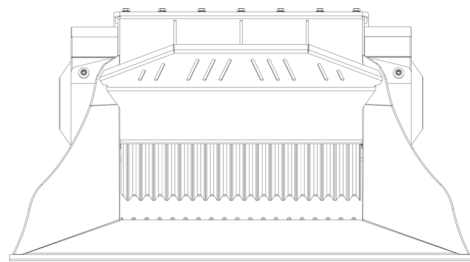
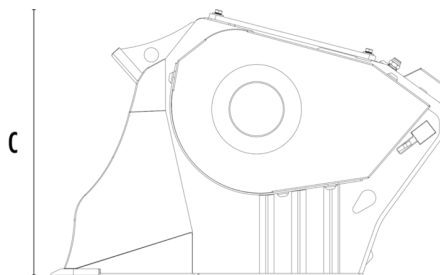


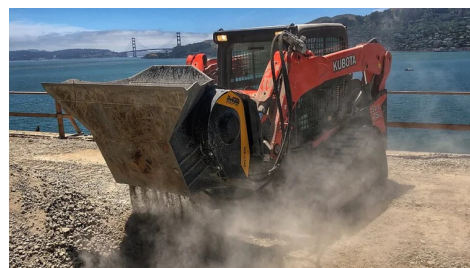
# CRUSHER BUCKET MB-L140 S2






A



B



## SPECIFICATIONS

	Recommended excavator	ton	7,5 - 13
	Recommended backhoe loader/loader*	ton	5 - 10
	Recommended skid steer loader*	ton	3 - 6
	Weight	ton	0,98
	Load capacity	m <sup>3</sup>	0.2
	Pressure	bar	200 - 250
	Back pressure	bar	< 10
	Oil flow rate**	l/min	98 - 150
	Crusher mouth width	mm	800
	Crusher mouth height	mm	250
	Size A	mm	1530
	Size B	mm	1230
	Size C	mm	800

\* Please verify machine's Rated Operating Capacity.

\*\* The minimum hydraulic flow rate value must be alongside the required operating pressure.

## OPTIONAL ACCESSORIES

Dust suppression kit	Hour meter
24 Month Warranty	

## APPLICATION AREAS



Demolitions



Road works



Inert material  
recycling



Urban construction  
sites