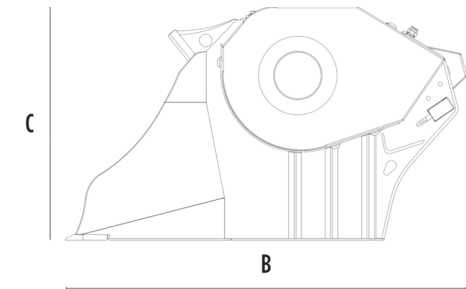
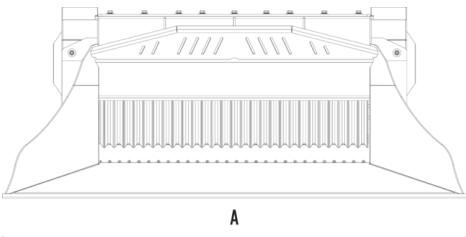
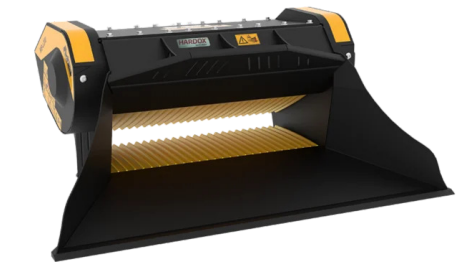





CRUSHER BUCKET

# MB-L200 S2



## SPECIFICATIONS

	Recommended excavator	ton	12 - 17
	Recommended backhoe loader/loader*	ton	7 - 12
	Recommended skid steer loader*	ton	6 - 8
	Weight	ton	1,5
	Load capacity	m³	0.43
	Pressure	bar	200 - 280
	Back pressure	bar	< 10
	Oil flow rate**	l/min	120 - 200
	Crusher mouth width	mm	1185
	Crusher mouth height	mm	280
	Size A	mm	2030
	Size B	mm	1435
	Size C	mm	835

\* Please verify machine's Rated Operating Capacity.  
\*\* The minimum hydraulic flow rate value must be alongside the required operating pressure.

## OPTIONAL ACCESSORIES

Dust suppression kit	Hour meter
24 Month Warranty	

## APPLICATION AREAS

